

Summers Place Auctions Ltd



Home & Garden

24 & 25th September 2024

Sp
SUMMERS PLACE
AUCTIONS

Live Auction (Lots 1-41)
Tuesday 24 Sept 2024
at 13.00 BST

Sealed Bid Auction (Lots 100-304)
Bids must be with us by 16.00 BST
Wed 26th Sept 2024
sealedbids@summersplaceauctions.com

Viewing By appointment only



Bid online at **Summers Place Live**
No surcharge (*normal BP & VAT apply*)
Register through our website

Bid online at our auctions through
the-saleroom.com

Please note there is a 5% surcharge for using
the sale-room bidding facility

SPECIALISTS AND AUCTION ENQUIRIES

Rupert van der Werff
Specialist
+44(0)1403 331 333
rupert.werff@summersplaceauctions.com

Errol Fuller
Curator for Natural History

Administrator/Accounts/Shipping

Kate Diment
+44(0)1403 331 335
kate.diment@summersplaceauctions.com

Julian Wright
+44(0)1403 331 337
julian.wright@summersplaceauctions.com

Office
+44 (0) 1403 331331

**Visit our website for additional
images and videos of many of the
Lots**

www.summersplaceauctions.com



1
An Istrian wellhead with cast iron overthrow

Italian
74cm wide by 64cm high, 76cm diameter

Provenance:
Once owned by the Italian Honorary Vice Consul in Guernsey Marchese Peruzzi, who was from an old Florentine family closely allied with the Medici' family; who held office during the 1960s. Sold at public auction circa 1971, following the death of the owner.

£6,000-10,000



For details of our buyers premium which is added onto the hammer price together with any other applicable charges and AML requirements, please refer to our guide for prospective buyers



2

A rare Georgian lead figure of Minerva attributed to John Cheere

circa 1760/70
on a later stone plinth
89cm high by 70cm wide; 184cm high overall

£5,000-8,000

Online bidding via SummersPlace Live - register through www.summersplaceauctions.com

3

**After the Antique: A
bronze figure of a fisher
boy**

53cm high

£800-1,200



For details of our buyers premium which is added onto the hammer price together with any other applicable charges and AML requirements, please refer to our guide for prospective buyers



4
A Pullham sundial

late 19th century
130cm high

£1,200-1,800

Online bidding via SummersPlace Live - register through www.summersplaceauctions.com



5

A pair of Portland stone finials

circa 1900
96cm high

£5,000-8,000

For details of our buyers premium which is added onto the hammer price together with any other applicable charges and AML requirements, please refer to our guide for prospective buyers



6
After Gott: A carved white marble figure

circa 1860
103cm high

£2,500-4,000

Online bidding via SummersPlace Live - register through www.summersplaceauctions.com



7

J Rhind (1828-1892): A marble statue of Robert Burns

signed J. Rhind

104cm high

£2,000-4,000



For details of our buyers premium which is added onto the hammer price together with any other applicable charges and AML requirements, please refer to our guide for prospective buyers



8
† A pair of carved
limestone hairy paw
benches

50cm high by 150cm wide
by 45cm deep

£2,000-3,000

Online bidding via SummersPlace Live - register through www.summersplaceauctions.com



9
† A pair of carved
limestone Roundel
benches

60cm high by 160cm wide

£2,000-3,000

For details of our buyers premium which is added onto the hammer price together with any other applicable charges and AML requirements, please refer to our guide for prospective buyers



10
An unusual wrought iron and wooden seat

early 20th century
186cm wide

£600-1,000

Online bidding via SummersPlace Live - register through www.summersplaceauctions.com



11

A rare cast iron seat

possibly German, late 19th century
130cm wide

£800-1,200

For details of our buyers premium which is added onto the hammer price together with any other applicable charges and AML requirements, please refer to our guide for prospective buyers



12
A cast iron circular table with central rose

late 19th century
72cm diameter

£300-500



13
A Coalbrookdale cast iron white painted cast iron table

19th century
73cm wide

£500-800



14
A carved white marble bust of a female

2nd half 19th century
72cm high

£800-1,200



15
A stoneware figure of Hebe

probably Blashfield
104cm high

£500-800

For details of our buyers premium which is added onto the hammer price together with any other applicable charges and AML requirements, please refer to our guide for prospective buyers



16
A pair of bronze torchères

180cm high

Once part of the facade or the interior of the
Unilever building London

£4,000-6,000

Online bidding via SummersPlace Live - register through www.summersplaceauctions.com



17
A Belgium torchère after a model by Jacques-Louis
Gautier

circa 1870
signed Compagnie Anongine dis Bronzes
140cm high

£6,000-10,000



For details of our buyers premium which is added onto the hammer price together with any other applicable charges and AML requirements, please refer to our guide for prospective buyers



18
A pair of Val D'Osne torchères

with bronzed patination
one with makers brass plaque
173cm high overall

£15,000-20,000

Online bidding via SummersPlace Live - register through www.summersplaceauctions.com

19

A bronze female nude

French, 20th century
100cm high

£4,000-6,000



For details of our buyers premium which is added onto the hammer price together with any other applicable charges and AML requirements, please refer to our guide for prospective buyers



20

▲ **Hamish Mackie: Life size lion**

Bronze

Signed and numbered Edition of 9

135cm by 53cm by 275cm

£12,000-18,000

Online bidding via SummersPlace Live - register through www.summersplaceauctions.com



21

▲ **Hamish Mackie: Life size lioness**

Bronze

Signed and numbered

Edition of 9

105cm by 41cm by 245cm

£12,000-18,000

For details of our buyers premium which is added onto the hammer price together with any other applicable charges and AML requirements, please refer to our guide for prospective buyers



22

▲ Gill Parker

A large bronze tortoise

7/9

150cm wide

£8,000-12,000

23

▲ **Simon Gudgeon**

Thoth

Bronze

initialled 2/6 2004

285cm high

£25,000-40,000



For details of our buyers premium which is added onto the hammer price together with any other applicable charges and AML requirements, please refer to our guide for prospective buyers



24

▲ **Simon Gudgeon**

Embrace

Bronze

Initialed and dated 2007

224cm high

£20,000-30,000

Online bidding via SummersPlace Live - register through www.summersplaceauctions.com



25
A bronze figure

second half 20th
century
112cm high

£2,500-4,000

26
**A bronze figure
of a mother and
child**

mid 20th century
79cm high overall

£3,000-5,000



For details of our buyers premium which is added onto the hammer price together with any other applicable charges and AML requirements, please refer to our guide for prospective buyers



27

An historically important reinforced concrete portion of the Berlin Wall

comprising four sections, with stencilled graffiti by Ben Wagin
PARLAMENT DER BAUME, DENK-STATTE SICH ZU VEREINEN,
HEISST TEILEN LERNEN

(Parliament of Trees, To Unite Means to Learn to Share)

Richard Weizsacker

360cm high, 240cm deep, 468cm wide overall

This originally formed part of the infamous Berlin Wall. The Berlin Wall was a guarded concrete barrier that physically and ideologically divided Berlin from 1961 to 1989. Constructed by the German Democratic Republic (GDR, East Germany), starting on 13 August 1961, the Wall cut off by land West Berlin from virtually all of

Online bidding via SummersPlace Live - register through www.summersplaceauctions.com

surrounding East Germany and East Berlin until government officials opened it in November 1989. Its demolition officially began on 13 June 1990 and finished in 1992. More than 5,000 escape attempts were made trying to flee life behind the Iron Curtain. Then on November 9, 1989, the first sledgehammers pounded into the concrete to “tear down this wall”. It took 18 months to bulldoze the 140 km (87 mile) structure. Most of the materials were crushed and recycled into roads. However, some sections were sold, auctioned off or donated as historically important objet d’arts. A number of large scale installations from the Berlin wall may be seen as far away as the World Trade Centre in Montreal, donated to the city in 1992, to Seoul, South Korea, where a three section portion of the wall stands in Berlin Square. It was brought to Seoul in 2005 as a gift from the City of Berlin to inspire South Koreans to hope for a similar reunification with North Korea in the future. Closer to home a single section stands outside the Imperial War Museum, London.

German artist and environmental activist Ben Wagin painted his powerful messages over these sections of the Wall in 1990 after initial visitors had chipped off the original graffiti - creating a uniquely textured surface. The effect is as dramatic as it is powerful. These sections were part of the memorial to the hundreds of people killed at the Wall trying to escape to freedom, called the Parliament of Trees, in the middle of Berlin opposite the Reichstag. These parts of the original memorial had to be removed to make room for additional constructions. The wall is covered with a quote by the German President at the time, Richard von Weizsäcker, who said: “To unite means to learn to share.” The reverse shows graffiti ‘Berlin November 1989’

£4,000-6,000

The Whistler Dodo collection

The following 14 lots and the second section at the end of the sealed bid sale all belonged to Ralfe and Hugo Whistler and formed the major part of their world renowned collection of all things Dodo

28

A Dodo (*Raphus cucullatus*) Scapular Coracoid, together with a letter from Edith Clark.

This bone is of great interest, as it is, apparently, the first bone that George Clark found. In her letter to Parkin his daughter Edith writes that he found it by the edge of the marsh and that it was this bone that inspired him to search the Mare aux Songes and look for more. It is therefore of enormous historical significance.

During 1865 and 1866 dodo bones were found in the Mare aux Songes, a swamp in Mauritius; before this, only skeletal fragments were known. The discovery at the Mare aux Songes coincided with the publication of *Alice's Adventures in Wonderland*, a story which featured a dodo, and this coincidence catapulted the extinct bird to super-stardom in the popular imagination.

The bones had all been found by a local schoolteacher named George Clark and most were quickly sent to London and Paris for auction, from where they soon passed into museum collections. However, Clark kept a few for himself and many years later (in 1921 and 1922) two of his daughters who had moved to Hastings in southern England contacted a local Hasting's collector, Thomas Parkin, for help in disposing of what they had left.

Parkin was friendly with another local resident the ornithologist Hugh Whistler, a man who had written a well known book on Indian birds. Parkin, who was elderly at the time and in poor



health bought several of the bones and passed them on to his friend.

Hugh Whistler died soon afterwards at a comparatively early age, but shortly before his death he gave the bones to his young son Ralfe who treasured them for the rest of his long life. Not only did Ralfe carefully preserve the bones, but they inspired his lifelong obsession with the dodo and the bones became the foundation of his enormous collection.

All of the following are the examples that Hugh and Ralfe owned and that came originally from the Mare aux Songes in Mauritius.

Errol Fuller

£8,000-10,000

For details of our buyers premium which is added onto the hammer price together with any other applicable charges and AML requirements, please refer to our guide for prospective buyers

29

**A pair of Dodo (*Raphus cucullatus*)
tibiotarsus, left and right**

£4,000-6,000



Online bidding via SummersPlace Live - register through www.summersplaceauctions.com

30

**A pair of Dod (*Raphus cucullatus*)
tarsometatarsus, left and right**

£4,000-6,000



For details of our buyers premium which is added onto the hammer price together with any other applicable charges and AML requirements, please refer to our guide for prospective buyers



31
**A single Dodo (*Raphus cucullatus*)
tarsometatarsus**

£1,500-2,500



32
A box of fragments of egg shells

These fragments came from George Clark's original find of dodo bones at the Mare aux Songes. They passed from Clark's daughters to Thomas Parkin and thence to the Whistlers. They have always been believed to be fragments of dodo eggs but in all the years since their discovery, they have never been scientifically tested. If they are from dodos they are unique, but they could be tortoise egg fragments. The bones of an extinct tortoise were also found at the Mare aux Songes

£200-400

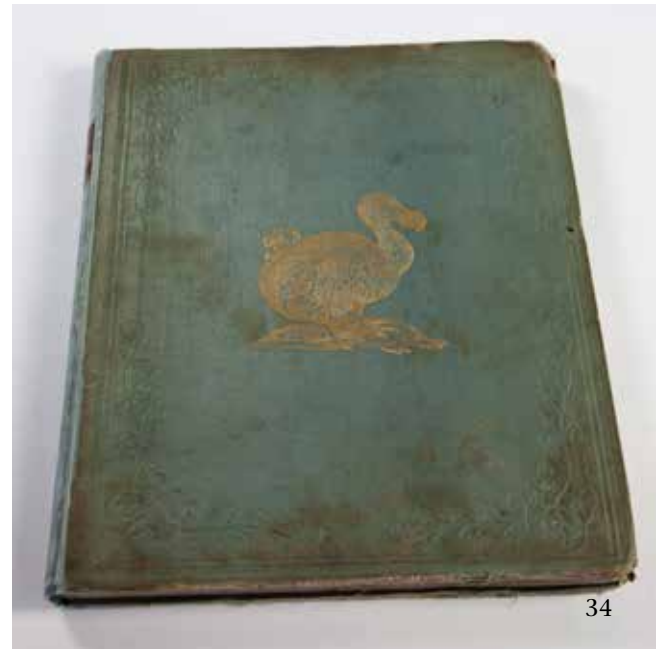
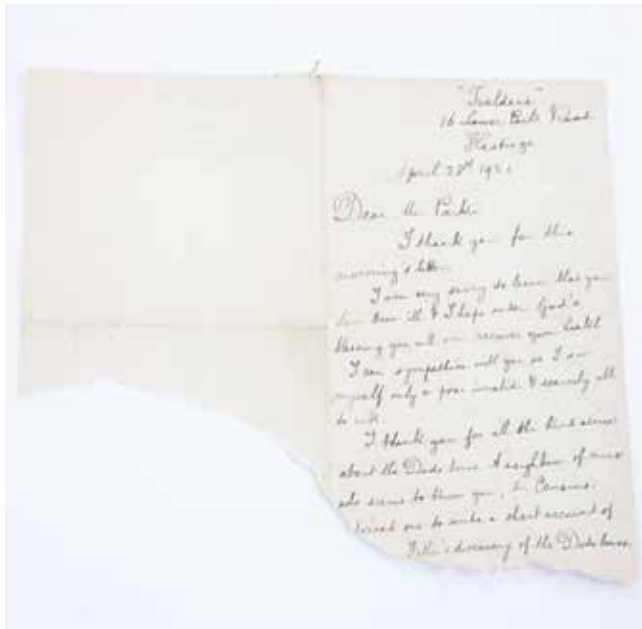
33
**A letter from Bessie Clark, dated
April 1921, concerning the
discovery of bones by her father**

£400-600

34
**Strickland H. E and Melville A. G.
(1848). *The Dodo and its Kindred***

This legendary and very rare book was the first published on the subject of the dodo and the accuracy of the information contained has never been surpassed. The wonderful lithographic illustrations remain the best ever published and there is a hand-coloured frontispiece

£1,400-1,600



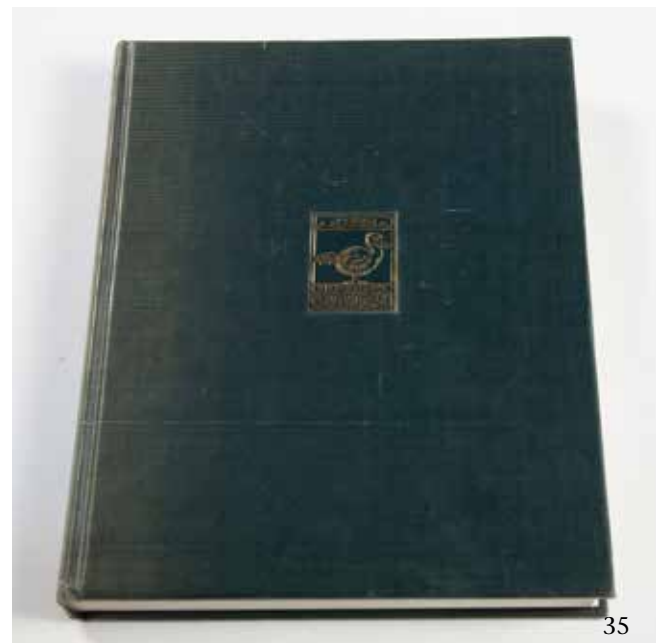
35
**Hachisuka. M. (1953) The
 Dodo and Kindred Birds**

Published in an edition limited to 485 copies, and illustrated with 22 plates (many in colour), this celebrated book was the culmination of the Japanese authors many years of research and interest in the subject.

Many years earlier, when Ralfe Whistler was just a child, Whistler had watched Hachisuka land his plane in his (Whistler's) father's garden. In the 1920's not only was this the first plane

that Ralfe had ever seen, Hachisuka was also the first Japanese person he had ever met.

So the book (published many years later) had a personal connection to the celebrated collector
 £400-600



For details of our buyers premium which is added onto the hammer price together with any other applicable charges and AML requirements, please refer to our guide for prospective buyers



36



38



37

36
Freeman Sithole

A carved stone Dodo
33cm high

£150-250

37
J Kried

Bronze
27cm high

£250-350

38
**A bronze Sculpture of a
Dodo**

Signed M.
12cm high

£300-500



39
A carved limestone Dodo
28cm high
£150-250



40
A ceramic sculpture of a
Dodo
22cm high
£50-80

41
DBS
2005
Ceramic
27cm high
£30-50



41

For details of our buyers premium which is added onto the hammer price together with any other applicable charges and AML requirements, please refer to our guide for prospective buyers

GUIDE FOR ABSENTEE BIDDERS

If you are unable to attend an auction in person, you may give Summers Place Auctions Bid Department instructions to bid on your behalf by completing the form overleaf.

This service is free and confidential.

Please record accurately the lot numbers, descriptions and the top hammer price you are willing to pay for each lot.

We will try to purchase the lot(s) of your choice for the lowest price possible and never for more than the top amount you indicate.

“Buy” or unlimited bids will not be accepted.

Alternative bids can be placed by using the word “OR” between lot numbers.

Bids must be placed in the same order as in the catalogue.

This form should be used for one sale only - please indicate the sale number, title and date on the form.

Please place your bids as early as possible, as in the event of identical bids the earliest received will take precedence. Wherever possible bids should be submitted at least twenty-four hours before the auction.

Where appropriate, your bids will be rounded down to the nearest amount consistent with the auctioneer's bidding increments.

Absentee bids, when placed by telephone, are accepted only at the caller's risk and must be confirmed by letter or fax to the Bid Department on +44 (0)1403 331 340.

Please note that the execution of written bids is offered as an additional service for no extra charge at the bidder's risk and is undertaken subject to Summers Place Auctions other commitments at the time of the auction; Summers Place Auctions

therefore cannot accept liability for failure to place such bids, whether through negligence or otherwise.

Successful bidders will receive an invoice detailing their purchases and giving instructions for payment and clearance of goods.

All bids are subject to the conditions of business applicable to the sale, a copy of which is available from Summers Place Auctions. Conditions of Business particularly relevant to buyers are also set out in the sale catalogue.

We reserve the right to seek identification of the source of funds received.

In connection with the management and operation of our business and the marketing and supply of Summers Place Auctions Companies' services, or as required by law, we may ask clients to provide personal information about themselves or obtain information about clients from third parties (e.g. credit information). If clients provide Summers Place Auctions with information that is defined by law as "sensitive", they agree that Summers Place Auctions may use it for the above purposes. Summers Place Auctions will not use or process sensitive information for any other purpose without the client's express consent.

In order to fulfil the services clients have requested, Summers Place Auctions may disclose information to third parties (e.g. shippers). Some countries do not offer equivalent legal protection of personal information to that offered within the EU. It is Summers Place Auctions policy to require that any such third parties respect the privacy and confidentiality of our clients' information and provide the same level of protection for clients' information as provided within the EU, whether or not they are located in a country that offers equivalent legal protection of personal information.

By signing this Absentee Bid Form you agree to such disclosure. Clients will please note that for security purposes, Summers Place Auctions premises are subject to video recording. Telephone calls e.g. telephone bidding/voicemail messages may also be recorded.

Please mail up to
23 Sept., 2024
The Walled Garden, Summers Place,
Billingshurst, West Sussex, RH14 9AB.

For Bids only:
Tel. +44 (0)1403 331 331

Sealed bid- How it works

Our sealed bid auctions close at 4.00pm on the day after the live auction, but are on view at the same time and are included in the same catalogue with an illustration, description and estimate. Clients wishing to leave bids should do so in writig or by emailing a signed scanned page detailing lot numbers, brief description and the bid(s) which they wish to leave. All clients should also have registered with us beforehand and provided photographic identification.

Sealed bids, when placed by telephone, are accepted only at the the caller's risk and must be confirmed by letter or e-mail to info@summersplaceauctions.com. You can also e-mail the completed sealed bid form to sealedbids@summersplaceauctions.com

Next give us your bid(s). This can be done by filling in the bidding slip found in your catalogue. If you are sending your bidding slip to Summers Place Auctions by post, please mark the envelope "Sealed Bid" so that we know it contains a sealed bid and do not open it accidentally. Bids and IDs may also be sent by e-mail. If you choose to send the bid electronically please email sealedbids@summersplaceauctions.com. This is a closed mailbox and will not be opened before the advertised time. However, we strongly recommend that if you have not viewed the sale in person, that you ask for condition reports on any lots you are thinking of leaving bids on.

Sealed bid auctions differ from established auctions in that the bid left is the bid that will be exercised in full. Therefore, if you decide to leave a bid of, say, £900 on the lot estimated at £800-1000 and there is no higher bid (where two identical bids are received, the earliest received bid will take precedence), £900 will secure the lot subject to buyer's premium and VAT on the premium.

We will contact you if you have been the successful bidder to inform you of the lot or lots that you have purchased, so that you can make payment and make arrangements for delivery. We have had many years of experience dealing with both UK carriers and international shippers and are happy to obtain quotations and facilitate transport and shipping of single lots and multiple purchases to anywhere in the world.

Bids will be opened on the Thursday following the sale; and sales results will appear on the Summers Place Auctions website. Please be mindful that we will have to process a large number of bids, which does take time. However, we will endeavour to get this accomplished as quickly as possible and will expect to have the results of the sale posted by the end of the day.

If you have never bid in a sealed bid sale before, here are some things to be aware of as regards leaving bids for this auction:

Every lot in the sale has a fixed reserve, (the minimum price for which the lot can be sold) and this is never above the low estimate, it can be slightly below, but in the vast majority of cases it is the low estimate.

The highest bid (as long as it is on or above the reserve) will be the winning bid. This is the 'hammer price' that the lot will be sold for.

You should consider leaving a bid of an odd amount in pounds, for example, rather than bidding £1,000, try say £1,004, as many lots have been bought for the sake of the odd £1!

You can tailor your bid in ways that are impossible to do in a live auction. For example, if you really like three lots, but only need one, and the piece you like the most is later in the sale, simply mark your order of preference. As long as your instructions are clear, having looked at any other bids left on the lots, we will do our best to comply with your preferences.

In the event of two identically highest bids, the earliest bid received will take precedence.

An auction price is made up of different components; the winning bid is called the 'hammer price'; A commission, which is in addition to the 'hammer price' is payable to the auctioneers. This is known as the buyers premium, on which VAT is payable. Lots marked with ▲ are subject to Artist Resale Right (ARR), which is 4% of the "hammer price". All lots that have additional VAT are clearly marked in the catalogue with a †.

Sealed Bid Auction Lots 100-304

All sealed bids must be with us, at the latest by 4pm BST on the 25th September since the bids will be opened on the 26th September. The winning bid will be the highest left on each lot above the reserve. Bids are non sequential and the highest bid left is the price at which the lot is sold plus buyers premium and any VAT liable. In the event of two identical winning bids being left on the same lot, the earliest received bid shall take precedence. Summers Place Auctions decision on which is the winning bid shall be final. Winning bidders will be invoiced after the bids are opened. For further information on sealed bids and how they work see our conditions of business.

100

A pair of steel estate gates designed by John Altram for the Wadhurst Park Estate

of unusual wave form
circa 1970
one gate illustrated
174cm high by 472cm wide overall

£2,000-3,000



101

A wrought iron estate gate

late 19th century
150cm high by 305cm wide

£600-800



For details of our buyers premium which is added onto the hammer price together with any other applicable charges and AML requirements, please refer to our guide for prospective buyers



102
A pair of wrought iron
gates

19th century
160cm high by 268cm
wide

£2,000-3,000

103
A pair of wrought iron
gates

early 20th century
223cm high by 130cm
wide

£300-£500

104
A large pair of French
doors

19th century
308cm high by 148cm
wide

£250-400



105
**A collection of twenty
limestone gatepier balls**

20th century
two without socles
55cm wide

£5,000-8,000

106
**A pair of carved
limestone finials**

late 20th century
(lacking socles)
78cm high

£2000-3000



For details of our buyers premium which is added onto the hammer price together with any other applicable charges and AML requirements, please refer to our guide for prospective buyers



107
A stone shop front

French, 19th century
4m by 4m approx
£2,000-3,000

109
A set of three unusual curved
wooden doors and surrounds

French, 19th century
267cm high by 108cm wide
£300-500



108
▲A carved bathstone
corbel probably by Andrew
Swinley

recent
56cm high
£400-600



110
A pair of carved sandstone finials

19th century
(lacking socles)
51cm wide

£200-300



111
A carved Yorkstone corbel

19th century or earlier
28cm high

£200-300



112
Architectural fragments from the Palace of Westminster removed during restoration works

41cm high approx

£300-500



113
A pair of hand carved gatepiers

19th century
51cm square

£300-400

For details of our buyers premium which is added onto the hammer price together with any other applicable charges and AML requirements, please refer to our guide for prospective buyers



114
A massive inlaid
marble Rococo
style architectural
entranceway



Italian, late 19th
century
482cm high
£20,000-30,000



115
A pair of rare cast iron
lamposts from St Martin,
Carribean

dated 1822
374cm high
£400-600



116
A cast iron bollard in the form
of a cannon

early 20th century
142cm high

£100-200



117
A collection of limestone balustrading

20th century

comprising: 25 wall balusters; 13 piers; 44 larger balusters; 40 small balusters, plus base sections and top sections

(Qty)

£5,000-8,000



118
Attributed to Esmond Burton: A monumental Portland stone clock, dated 1956

109cm high by 277cm wide

Provenance;
 The clock was removed from the Anglo American and DeBeers building, London which was refurbished in the 1970's. The original location for this clock is not known but stylistically it very much fits with Burton's work at the time.

£5,000-8,000

For details of our buyers premium which is added onto the hammer price together with any other applicable charges and AML requirements, please refer to our guide for prospective buyers



120
Two pet gravestones

the largest 56cm high

£150-250



121
A stone plaque

20th century
54cm square



£300-400

122
A set of three massive stoneware chimneypots

late 19th century
together with **additional sections**
166cm high

£1,500-2,500



123
Two terracotta ridge tiles

late 19th century
76cm high

£450-550



119
A terracotta dragon

circa 1900
60cm long

£250-400



124
A rare pair of lead caryatid figures

19th century or earlier
110cm high

£6,000-10,000



125
A wrought iron gate overthrow

French, 18th century
217cm wide

£300-500

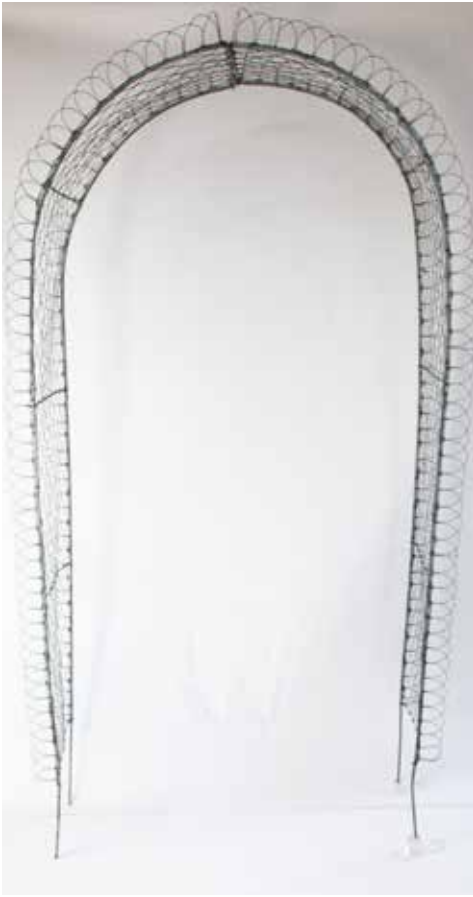


126
A pair of composition stone birdbaths

20th century, 61in diameter

£400-600

For details of our buyers premium which is added onto the hammer price together with any other applicable charges and AML requirements, please refer to our guide for prospective buyers



127
A wirework rose arch
2nd half of 20th century
258cm above ground
38cm submerged feet
£400-600

128
**An unusual carved Yorkstone
bootscraper**
early 20th century, 34cm high
£250-400

129
**A rare Coalbrookdale terracotta
pedestal**
19th century, with later armillary
160cm high overall
£600-1,000

130
A four side sundial
(made up) on tapering cylindrical
pedestal
148cm high
£300-500

131
† A set of 10
sandstone Firle
planters

36cm high

£1,500-2,500



For details of our buyers premium which is added onto the hammer price together with any other applicable charges and AML requirements, please refer to our guide for prospective buyers



132
A cast iron planter

French, late 19th century
65cm high by 74cm wide

£500-700



133
A cast iron pestle and mortar

French, 18th century or earlier
60cm high

£400-600

134
A stone wall sundial plate

19th century
with iron gnomon
45cm high

£200-300



135
A garden roller

19th century, 68cm wide

£120-180



136
† A group of 10 sandstone
Loxwood planters
with copper banding
40cm high by 56cm wide by
56cm deep
£3,000-5,000

For details of our buyers premium which is added onto the hammer price together with any other applicable charges and AML requirements, please refer to our guide for prospective buyers



138
A Cornish granite
D-shaped trough

61cm high by 147cm wide
by 100cm deep

£3,000-5,000

139
A carved stone planter

51cm diameter

£50-100

139A
†A pair of carved
limestone 'artichoke'
finials

52cm high

£600-1,000



137
A large carved gritstone
trough

20th century
136cm by 96cm by 34cm
£300-500



139





140
A pair of cast iron urns on pedestals

circa 1870, possibly Handyside
108cm high

£500-800

141
A carved white marble urn

80cm high

£500-800

142
A pair of Doulton urns

circa 1900, restorations
70cm high

£300-500



For details of our buyers premium which is added onto the hammer price together with any other applicable charges and AML requirements, please refer to our guide for prospective buyers



143
A cast iron pedestal

late 19th century
urns 86cm high

£450-550

144
**A composition stone
pedestal**

modern

112cm high

£150-250

145
A cast iron urn

19th century
on associated pedestal
urns 87cm high; 340cm
overall

£400-600

146
**A pair of cast iron putti
holding cornucopia**

late 20th century
82cm high

£1,000-1,200



147
**A pair of lead
 Blackamoors finials**

98cm high
 base 30cm square

£400-600

148
**A pair of carved
 limestone rustics**

20th century
 150cm high

£600-1,000



149
**A cast iron owl on lead
 plinth**

20th century
 88cm high

£800-1,000



150
**A composition stone
 fountain figure**

20th century
 147cm high

£300-500



For details of our buyers premium which is added onto the hammer price together with any other applicable charges and AML requirements, please refer to our guide for prospective buyers



151
**A pair of carved
limestone staddlestones**

72cm high approx

£300-500

152
**† A set of 8 sandstone
spheres**

30cm diameter

£800-1,200

153
**† A pair of sandstone
spheres**

46cm diameter

£400-600



154
A composition stone
figure of two cherubs
holding a shell bowl

2nd half 20th century
100cm high
together with a
composition stone trough
70cm long
£200-300

155
A north country
primitive figure

19th century
113cm high

£300-500



156
A plaster bust of Oliver
Cromwell

91cm high

£400-600

157
A bronze group of
dolphins

20th century
99cm wide

£500-800



For details of our buyers premium which is added onto the hammer price together with any other applicable charges and AML requirements, please refer to our guide for prospective buyers



158
A terracotta figure of a bird lady

French, circa 1900
Impressed SEAU PARIS
187cm high, (restorations)
on later base, to be used as a fountain
£500-800

Online bidding via SummersPlace Live - register through www.summersplaceauctions.com



159
A stoneware group

late 19th century
possibly by Doulton
142cm high
£1,500-2,500



160
A composition stone figure of Hebe

late 20th century
192cm high
£500-800

161

A figural bronze fountain

20th century

78cm high

£1,000-1,500



162

After the Antique: two composition stone Riace bronzes

late 20th century

142cm high

£500-800



163

A bronze fountain of a Marlin

20th century

252cm high

£2,000-3,000



For details of our buyers premium which is added onto the hammer price together with any other applicable charges and AML requirements, please refer to our guide for prospective buyers



164
† A set of 6 Slindon
sandstone stools/
pedestals

40cm high by 30cm square

£1,000-1,500

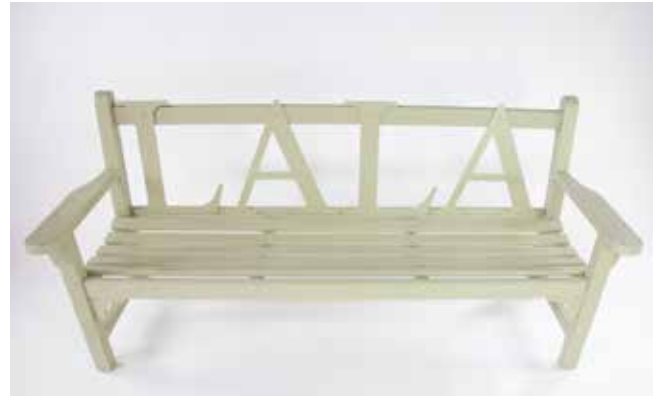
165
A large wrought iron
dining set

comprising table and 10
chairs ensuite
2m by 2m by 86cm

£2,000-3,000



Online bidding via SummersPlace Live - register through www.summersplaceauctions.com



166

A pair of oak seats

recent

192cm wide

£1,200-1,800

167

A large composition stone bench

20th century

181cm wide

£400-600



167

168

A curved limestone garden bench

recent

140cm wide

£800-1,200



168

For details of our buyers premium which is added onto the hammer price together with any other applicable charges and AML requirements, please refer to our guide for prospective buyers



169
A cast iron stick stand in the style of Coabrookdale

20th century
84cm high

£650-850

170
A pair of laquered brass and glass square pedestals by Pierre Vandel Paris

100cm high by 30cm square

£100-150

171
A Fern and Blackberry style cast iron seat

20th century
109cm wide

£300-500

172
A pair of cast iron 'Napoleon' chairs

19th century

£400-600



173

A cast iron circular table

circa 1900

61cm diameter

£400-600

174

**A Coalbrookdale
Italianate pattern seat**

late 19th century

losses to feet

165cm wide

£600-1,000



For details of our buyers premium which is added onto the hammer price together with any other applicable charges and AML requirements, please refer to our guide for prospective buyers



175
**A wrought iron and
wooden seat**

early 20th century
with plaque inscribed
'from the mound Lords
Cricket ground'
180cm wide

£300-500

176
**A Regency style wrought
iron plant stand**

60cm high by 92cm wide
by 44cm deep

£200-300





177
A bronze chimpanzee

72cm high

£6,000-10,000



178
Anon

Nineteen
Bronze
82cm high by 56cm wide

£2,000-3,000

For details of our buyers premium which is added onto the hammer price together with any other applicable charges and AML requirements, please refer to our guide for prospective buyers



179
**Maria Bayardo (Mexican,
b.1963)**

Bulls
Corten Steel
Unique
186cm high by 450cm
wide by 240cm deep

£50,000-70,000

180
**John Cox (British, 1952-
2014)**

Leaping Roe Deer Stag &
Hind
Bronze
126cm high by 106cm
wide by 35cm deep each

£6,000-8,000



Online bidding via SummersPlace Live - register through www.summersplaceauctions.com

181

Lucy Kinsella

Monumental Boxing Hares

Bronze

Edition of 9

196cm high by 175cm
wide by 48cm deep

£40,000-50,000



For details of our buyers premium which is added onto the hammer price together with any other applicable charges and AML requirements, please refer to our guide for prospective buyers



182
▲Piers Mason (British
1974-2023)

Landing Heron
Bronze
Edition 1 of 6
95cm high by 150cm wide
by 105cm deep

£20,000-30,000

183
▲ Piers Mason (British
1974-2023)

Swan Landing
Steel and Brass
Unique
90cm high by 180cm wide
by 80cm deep

£10,000-15,000



Online bidding via SummersPlace Live - register through www.summersplaceauctions.com



184
† Tanya Brett

Marwari Horse, 2022
Ceramic
48cm high
£3,000-5,000



185
† Tanya Brett

Long Dog
Ceramic
49cm high
£2,000-3,000

186
John Cox, (British, 1952-2014)

The Silverback Gorilla
Bronze
182cm high by 107cm
wide

£10,000-15,000



For details of our buyers premium which is added onto the hammer price together with any other applicable charges and AML requirements, please refer to our guide for prospective buyers



187
† Large Reflection Tower

stainless steel
400cm high

£1,000-1,500



188
† Large Reflection Tower

Stainless Steel
400cm

£1,000-1,500



189
▲Martyn Barratt,
(British, b.1965)
Lifeline, Bronze, 225cm
high

£4,000-6,000



190
▲Frederic Chevarin
Infinity, Carrara Marble
207cm high by 12cm wide
by 30cm deep

£6,000-8,000



191
▲ Paul Smith (English, b.1961)

Strange Little Girl
Marble and Slate Resin
Signed and Numbered from an
edition of 12
181cm high

£3,000-5,000

192
Isaac Kahn (Lithuanian, b.1950)

Dancer
Bronze on Stone base
Edition 3 of 8
200cm high

£15,000-18,000



193
▲ Fleur Gray

Tethys (Goddess of the Sea)
Bronze
216cm high

£3,000-5,000



For details of our buyers premium which is added onto the hammer price together with any other applicable charges and AML requirements, please refer to our guide for prospective buyers



194
Anon

Leap Frog
Bronze on Marble base
54cm high by 115cm wide
by 68cm deep

£1,200-1,600

195
Innocent Nyashenga

Whale Tail
Agate Stone
Unique
30cm high by 32cm wide
by 13cm deep

£800-1,200

196
Anon

British Bulldog
Teak
Unique
40cm high by 80cm wide
by 30cm deep

£800-1,200





197

▲ **Janis Ridley**

Man and Horse

Bronze

Signed

Edition 2 of 9

120cm high by 115cm

wide by 52cm deep

£22,000-28,000

For details of our buyers premium which is added onto the hammer price together with any other applicable charges and AML requirements, please refer to our guide for prospective buyers



198
▲ Jonathan Loxley, (British, b.1960)

Conception
Blu Turkin Marble on Hardwood African
Base
Unique
204cm high by 110cm wide by 40cm deep

£18,000-20,000



199
Anon

Cascading Bloom
Water Feature
Stainless Steel and Copper
Unique
230cm high by 103cm wide by 45cm
deep

£2,000-4,000

Online bidding via SummersPlace Live - register through www.summersplaceauctions.com

200

John Cox (British, 1952-2014)

Huge Crocodile
Water Feature
Lost Wax Bronze
88cm high by 141cm wide
by 390cm long

£6,000-8,000

201

Victor Matafi

Finding a Consensus
White Dolomite
Unique
162cm high by 95cm wide
by 58cm deep

£5,000-7,000

202

John Cox (British, 1952-2014)

Flight of Ducks II (Water
Fountain)
Bronze
127cm high by 95cm wide
by 80cm deep

£3,000-5,000



For details of our buyers premium which is added onto the hammer price together with any other applicable charges and AML requirements, please refer to our guide for prospective buyers



203
Martin Norman

Dive Dive Dive
Octopus Water Feature
Electric with plug
Bronze Resin and Corten
Steel
Edition 3 of 24
90cm total height

£2,000-4,000

204
Mother Nature

Giant Root Throne
Teak
Unique
223cm high

£1,500-2,500

205
Fungai Dodzo

Three Toad Stools
Serpentine Stone
Unique
Highest 32cm high by
13cm wide by 15cm deep
Smallest 15cm high by
15cm wide by 14cm deep

£200-400



206
**An aerofoil stone tablet
with hand carved
inscription**

inscribed ' All the flowers
of all the tomorrows are in
the seeds of today'
104cm high

£150-250



207
▲ Danu (French, b.1955)

Atruche
Stove Enamelled Heavy
Guage Steel
Signed and numbered
from edition of 80
200cm high by 150cm
wide

£3,000-5,000

For details of our buyers premium which is added onto the hammer price together with any other applicable charges and AML requirements, please refer to our guide for prospective buyers



208
Quite possibly a partial
Polacanthus footprint

38cm by 32cm
£200-300

209
A massive unidentified
dinosaur footprint

114cm by 90cm; print 53cm wide
£200-300

210
A large partial dinosaur
footprint

(one toe missing) 64cm by
50cm together with a very rare
ammonite block, 44cm by 26cm
£200-300

211
Quite possible a Baryonix
footprint

37cm by 30cm
£200-300

212

A marine triptych

consisting of tropical Thai Haliotis ovina abalone shells, Verrucella soft corals, Victorian collection of European and South African limpet and keyhole limpet shells
Frames: 70cm by 50cm by 5cm; 30cm by 70cm by 5cm

All Non-CITES: Haliotis ovina (Thailand)
Verrucella species (Madagascar); diverse Fissurellidae and Patellidae (mainly South Africa and Europe, collected 870-1910 from the Philippines.

£1,800-2,200



213

A marine dyptych star fish

Consisting of two frames with two 19th century copper plate engravings of Lamarch accessorised with star fish
Frames: 70cm by 50cm by 3.5cm; 40cm by 50cm by 3.5cm

£800-1,200



For details of our buyers premium which is added onto the hammer price together with any other applicable charges and AML requirements, please refer to our guide for prospective buyers



214
A mount of North Sea
edible sea urchins

recent
75cm high
£100-200



215
A framed composition of
North Sea edible sea urchin

50cm wide by 70cm high
£800-1,200



216
A giant deep sea Isopod in
glass dome

French, 20th century
dome 57cm high by 22cm
diameter; specimen length
24cm
Non-CITES
£600-1,000



217
**A large picture frame
case of crustaceans**

57cm high by 67cm wide
£500-800



219
A Coco de mer

27cm wide by 32cm long
by 14cm deep
£300-500

218
**A pair of replica giant
clam shells**

66cm wide
£150-250



For details of our buyers premium which is added onto the hammer price together with any other applicable charges and AML requirements, please refer to our guide for prospective buyers



220
An Asmat tribal
human skull from
Papua New Guinea

50cm high overall
£1,200-1,500

221
An amethyst
veneered carved
white marble tazza

modern
25cm high by 46cm
diameter

£50-80

222
A Papua New
Guinea Abelan
tribe wagnen
headdress

East Sepik River
region, brought to
Europe between
1930 and 1940
Headress 43cm high
by 33cm wide
£400-600

223

**A full mount white
lioness**

recent

128cm high

£3,000-5,000



For details of our buyers premium which is added onto the hammer price together with any other applicable charges and AML requirements, please refer to our guide for prospective buyers



224
A large red deer stag's head

1891
Weald Park
133cm high by 102cm wide
£500-800

226
A massive set of Red deer antlers on shield, 12 points

130cm high by 103cm wide
£800-1,200



225
A massive set of Red deer antlers on carved shield, 13 points

125cm high by 114cm wide
£800-1,200



227
A moose head mount

112cm high by 101cm
deep

£1,500-2,000



228
An American bison head

74cm high by 71cm deep

£600-800

229
A full mount peccary on
decorative base

89cm long

£500-700



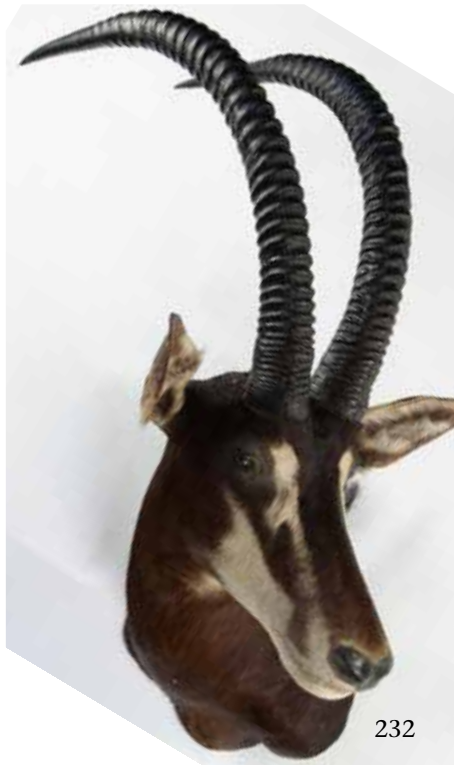
For details of our buyers premium which is added onto the hammer price together with any other applicable charges and AML requirements, please refer to our guide for prospective buyers



230

230
**An impressively large
greater Kudu head by Peter
Spicer**

188cm high by 96cm deep
£500-800



232

231
An Eland head

120cm high by 97cm deep
£500-800

232
A Sable antelope trophy

20th century
130cm high by 70cm deep
£600-1,000



231

233
A Wilderbeest head mount

78cm deep
£450-550



233



234
A Common marmoset

30cm high overall

£150-240



235
A dome of tropical South American birds

circa 1860
76cm high

£1,200-1,500



236
A white Peahen on pedestal mount

150cm high
£500-700

For details of our buyers premium which is added onto the hammer price together with any other applicable charges and AML requirements, please refer to our guide for prospective buyers

The Whistler Dodo collection Part 2 Lots 237-304

The following lots are all being sold without reserve



237
Jonathan Adams After Savary
Oil on canvas
99cm high by 119cm wide
£100-200

238
Lisa Birke

2005
Acrylic
38cm high by 38cm wide
£60-100



239
Clive Jones
Oil
46cm high by 54cm wide
£200-300



240

Clive Jones

Acrylic

30cm high by 74cm wide

£100-200



241

**Digital drawing by
Mick Schney after Jacob
Hoefnagel**

26cm high by 60cm wide

£60-80

242

Clive Fredrikson

2007

Acrylic

30cm high by 48cm wide

£80-120



243

Kate Adams

1992

Watercolour

17cm high by 13cm wide

£50-80



243



242

For details of our buyers premium which is added onto the hammer price together with any other applicable charges and AML requirements, please refer to our guide for prospective buyers



244



247



248



245

244
Julia Finzel
2000
Watercolour
31cm high by 22cm wide
£30-50

245
Sylvia Tiffin
Print
36cm high by 26cm wide
£20-30

246
Steve Fricker
2003
21cm high by 30cm wide
£20-30



246

247
Dino Mazzoli
1994
35cm high by 29cm wide
£30-50

248
Victoria Edwards
2003
Watercolour
38cm high by 29cm wide
£40-60



249

249
J Fenwick Lansdown O.C
RCA

2001
 Watercolour
 22cm high by 25cm wide

£50-80

250
PBD

Watercolour
 25cm high by 26cm wide

£60-100



250

251
A quantity of Richard Bawden
Tea towels and a block print

Tea towels: 80cm high by 47cm
 wide approx 120
 Block print: 22cm high by 15cm
 wide

£40-60

252
Susan Moxley

Print
 26cm high by 29cm wide

£20-30

253
Anna Walsh

Acrylic
 40cm high by 40cm wide

£30-50



251



252



253

For details of our buyers premium which is added onto the hammer price together with any other applicable charges and AML requirements, please refer to our guide for prospective buyers



254



257



258

257
Terry Gillecki

2002
Oil
34cm high by 26cm wide
£40-60

258
PBD

Watercolour
29cm high by 36cm wide
£30-50



255

254
Pierre Diamantopoulos
Watercolour
14cm high by 14cm wide

£30-50

255
Peter Jones

2009
Oil on canvas
29cm high by 39cm wide

£40-60

256
Henry Kondracki

Oil
25cm high by 22cm wide

£40-60



256



259

C Matthews

2005

Print

1/12

39cm high by 39cm wide

£20-30

260

Rebecca Jewell

2011

Print

24cm high by 20cm wide

£20-30



260

261

Rob Chaplin

2002

Pen and ink

14cm high by 9cm wide

£30-50

262

Jonathan Adams

Print

83cm high by 103cm wide

£20-30

263

Gary Anderson

1994

Print

35cm high by 35cm wide

£20-30



261



262



263

For details of our buyers premium which is added onto the hammer price together with any other applicable charges and AML requirements, please refer to our guide for prospective buyers



264
Patrizio Belcampo

Signed print
Item in protective cover
59cm high by 58cm wide

£20-30

265
Margaret Knott

2004
Print
39cm high by 39cm wide

£20-30

266
S Derrick

1998
Bronze
5/30
50cm high

£250-400



267
Gillian Mc Millan.

Ceramic
2008
28cm high

£60-100



268
JS

37cm high

£20-30

269
Chris Manley

Ancient Dorset beech from storm
of '87
21cm high

£30-50

270
Gillian McMillan

Ceramic
2007
22cm high by 29cm wide

£60-100



For details of our buyers premium which is added onto the hammer price together with any other applicable charges and AML requirements, please refer to our guide for prospective buyers



271
**Wooden sculpture with
concealed drawer**

19cm high

£30-50

272
Resin sculpture of a Dodo

78cm high

£40-60

273
Ceramic sculpture

Signed M
18cm high

£30-50



274
Julian Pender Hume

2003
Watercolour
40cm high by 50cm wide

£40-60

275
Annabel Fairfax

Watercolour
30cm high by 41cm wide

£40-60



276
Ann Edwards

Watercolour
26cm high by 19cm wide

£20-30

277
T Lawrence

2004
Watercolour
28cm by 38cm

£20-30



For details of our buyers premium which is added onto the hammer price together with any other applicable charges and AML requirements, please refer to our guide for prospective buyers



278



280



279

278
A collection of fourteen
Dodo paintings and
prints

£150-£250

279
A collection of eleven
Dodo paintings

£150-£250

280
A collection of thirteen
Dodo paintings

£60-100

281
A collection of metal
Dodo themed items

£50-80



282
A miscellaneous ceramic
Dodo collection

£30-50



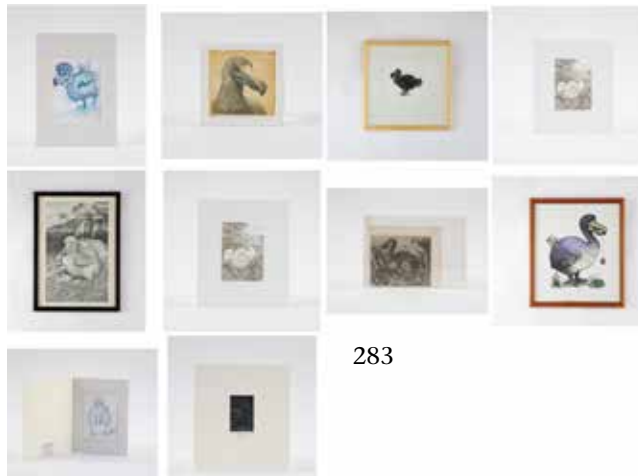
283
A collection of ten Dodo
prints

£30-50



281

282



283

For details of our buyers premium which is added onto the hammer price together with any other applicable charges and AML requirements, please refer to our guide for prospective buyers

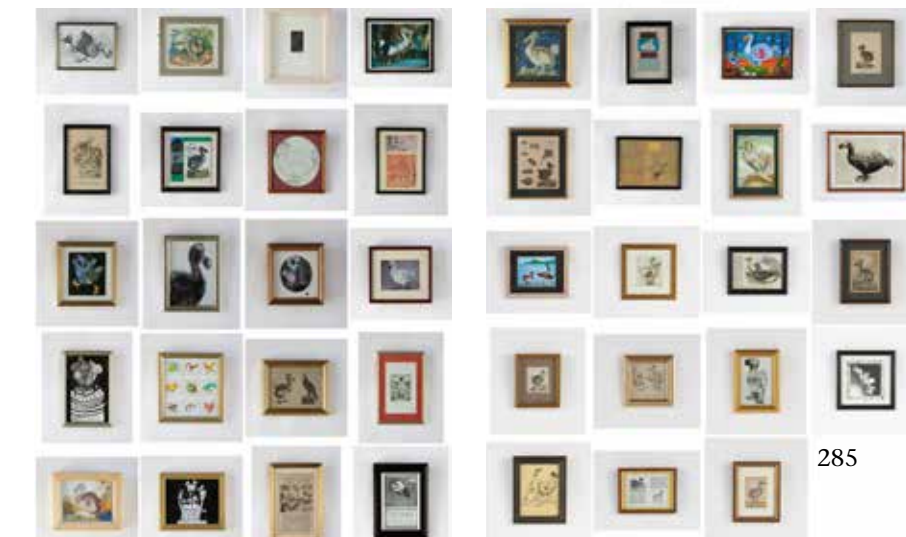


284
A collection of thirty
four Dodo prints

£100-200

285
A collection of thirty
nine Dodo prints

£100-200



284

286
Two Dodo embroideries
and soft toys

£20-30

285



286

287
A group of ceramic Dodo
items

£40-60



288
A group of five Dodo
sculptures

£100-200



287

289
A collection of
miscellaneous Dodo
items

£20-30



288



289

For details of our buyers premium which is added onto the hammer price together with any other applicable charges and AML requirements, please refer to our guide for prospective buyers



290
Rowland Ward: A rare King penguin

early 20th century
in all glass case (distressed)
90cm high by 68cm wide

£400-£600

293
A Golden eagle mount with travelling case and letter

dated 1907
92cm

£400-£600



291
James Gardiner: A case of mainly African birds

including a pied kingfisher
label to rear
71cm high by 63cm wide

£200-£300

292
A collection of Dodo related books

£100-£200





294

294
H Munahan

Bluebills
 Oil
 29cm high by 24cm wide

£50-80

295
Josh Partridge

1986
 Watercolour
 55cm high by 47cm wide

£30-50



295

296
W Allan Hancock

Acrylic
 14cm high by 29cm wide

£40-60

297
W Allan Hancock

2002
 Print
 No.64
 27cm high by 42cm wide

£20-30

298
S Message

1994
 Watercolour
 20cm high by 41cm wide

£40-60



296



297



298

For details of our buyers premium which is added onto the hammer price together with any other applicable charges and AML requirements, please refer to our guide for prospective buyers



299



301



300

299
J T Landsdowne

1987
Watercolour
48cm high by 35cm wide

£150-250

300
Winnifred Austen

Print
18cm high by 23m wide

£20-30

301
Ralson Gudgeon

Watercolour
50cm high by 37cm wide

£80-120



302
DM Teague

1990
Watercolour
24cm high by 21cm wide

£40-60



303
GE Lodge

Watercolour
28cm high by 21cm wide

£20-30

304
**Himalayan Black Bear
Skull**

Ursus Thibetanus
27cm long

£80-120



For details of our buyers premium which is added onto the hammer price together with any other applicable charges and AML requirements, please refer to our guide for prospective buyers

Summers Place Auctions Ltd

SALE NUMBER

SB250324

BIDS MUST BE RECEIVED BY

25 Sept, 2024, 4PM BST

IMPORTANT

The winning bid will be the highest left on each lot above the reserve. Bids are non sequential and the highest bid left is the price at which the lot is sold plus buyers premium and any VAT liable. In the event of two identical winning bids being left on the same lot, the earliest received bid shall take precedence. Summers Place Auctions decision on which is the winning bid shall be final.

Clients wishing to bid on an "either or" basis should list the lots they are interested in with the price they are prepared to pay in order of preference with "OR" written between each one.

NEW CLIENTS

Please note that we may contact you to Request a band reference. In addition we Will require sight of a government issued ID and proof of address prior to collection of purchases.

Title _____
 First name _____ Last name _____
 Address _____
 _____ Postcode _____
 Tel _____ Mobile _____
 Email _____ Fax _____

Please write clearly and place your bids as early as possible, as in the event of identical bids, the earliest bid received will take precedence. Bids should be submitted in (£) sterling at least 24 hours before the auction.

SEALED BIDDING FORM

Lot No.	Lot Description	Maximum Sterling price (excluding premium & VAT)

I agree to be bound by Summers Place Auctions Ltd "Condition of Business" as published in the catalogue which govern all purchases at auction, and to pay the published Buyer's Premium on the hammer price plus any applicable taxes.

I consent to the use of this information and any other information obtained by Summers Place Auctions.

I am aware that all telephone bid lines may be recorded.

Payment is due immediately after the sale in pounds sterling. Full details on how to pay are included in our Guide for Buyers.

Signed _____ Dated _____

GUIDE FOR ABSENTEE BIDDERS FOR SEALED BID AUCTION

SEALED BID AUCTION LOTS 100-304

All sealed bids must be with us, at the latest, by 27th Sept, 4.00pm BST since the bids will be opened on the 28th Sept. The winning bid will be the highest left on each lot above the reserve. Bids are non sequential and the highest bid left is the price at which the lot is sold plus buyers premium and any VAT liable. In the event of two identical winning bids being left on the same lot, the earliest received bid shall take precedence. Summers Place Auctions decision on which is the winning bid shall be final. Winning bidders will be invoiced after the bids are opened.

Sealed bids, when placed by telephone, are accepted only at the caller's risk and must be confirmed by letter or e-mail to the Bid Department.

Successful bidders will receive an invoice detailing their purchases and giving instructions for payment and clearance of goods.

All bids are subject to the conditions of business applicable to the sale, a copy of which is available from Summers Place Auctions. Conditions of Business particularly relevant to buyers are also set out in the sale catalogue.

We reserve the right to seek identification of the source of funds received.

In connection with the management and operation of our business and the marketing and supply of Summers Place Auctions Companies' services, or as required by law, we may ask clients to provide personal information about themselves or obtain information about clients from third parties (e.g. credit information). If clients provide Summers Place Auctions with information that is defined by law as "sensitive", they agree that Summers

Place Auctions may use it for the above purposes. Summers Place Auctions will not use or process sensitive information for any other purpose without the client's express consent.

In order to fulfil the services clients have requested, Summers Place Auctions may disclose information to third parties (e.g. shippers). Some countries do not offer equivalent legal protection of personal information to that offered within the EU. It is Summers Place Auctions policy to require that any such third parties respect the privacy and confidentiality of our clients' information and provide the same level of protection for clients' information as provided within the EU, whether or not they are located in a country that offers equivalent legal protection of personal information. By signing this Sealed Bid Form you agree to such disclosure. Clients will please note that for security purposes, Summers Place Auctions premises are subject to video recording. Telephone calls e.g. telephone bidding/voicemail messages may also be recorded.

Please mail up to
25 Sept., 2024, 4pm BST
The Walled Garden, Summers Place,
Billingshurst, West Sussex, RH14 9AB.

For Bids only:
Tel. +44 (0)1403 331 331

Email
sealedbids@summersplaceauctions.com

Online bidding via SummersPlace Live - register through www.summersplaceauctions.com

Sealed bid- How it works

Our sealed bid auctions close at 4.00pm on the day after the live auction, but are on view at the same time and are included in the same catalogue with an illustration, description and estimate. Clients wishing to leave bids should do so in writig or by emailing a signed scanned page detailing lot numbers, brief description and the bid(s) which they wish to leave. All clients should also have registered with us beforehand and provided photographic identification.

Sealed bids, when placed by telephone, are accepted only at the the caller's risk and must be confirmed by letter or e-mail to info@summersplaceauctions.com. You can also e-mail the completed sealed bid form to sealedbids@summersplaceauctions.com

Next give us your bid(s). This can be done by filling in the bidding slip found in your catalogue. If you are sending your bidding slip to Summers Place Auctions by post, please mark the envelope "Sealed Bid" so that we know it contains a sealed bid and do not open it accidentally. Bids and IDs may also be sent by e-mail. If you choose to send the bid electronically please email sealedbids@summersplaceauctions.com. This is a closed mailbox and will not be opened before the advertised time. However, we strongly recommend that if you have not viewed the sale in person, that you ask for condition reports on any lots you are thinking of leaving bids on.

Sealed bid auctions differ from established auctions in that the bid left is the bid that will be exercised in full. Therefore, if you decide to leave a bid of, say, £900 on the lot estimated at £800-1000 and there is no higher bid (where two identical bids are received, the earliest received bid will take precedence), £900 will secure the lot subject to buyer's premium and VAT on the premium.

We will contact you if you have been the successful bidder to inform you of the lot or lots that you have purchased, so that you can make payment and make arrangements for delivery. We have had many years of experience dealing with both UK carriers and international shippers and are happy to obtain quotations and facilitate transport and shipping of single lots and multiple purchases to anywhere in the world.

Bids will be opened on the Thursday following the sale; and sales results will appear on the Summers Place Auctions website. Please be mindful that we will have to process a large number of bids, which does take time. However, we will endeavour to get this accomplished as quickly as possible and will expect to have the results of the sale posted by the end of the day.

If you have never bid in a sealed bid sale before, here are some things to be aware of as regards leaving bids for this auction:

Every lot in the sale has a fixed reserve, (the minimum price for which the lot can be sold) and this is never above the low estimate, it can be slightly below, but in the vast majority of cases it is the low estimate.

The highest bid (as long as it is on or above the reserve) will be the winning bid. This is the 'hammer price' that the lot will be sold for.

You should consider leaving a bid of an odd amount in pounds, for example, rather than bidding £1,000, try say £1,004, as many lots have been bought for the sake of the odd £1!

You can tailor your bid in ways that are impossible to do in a live auction. For example, if you really like three lots, but only need one, and the piece you like the most is later in the sale, simply mark your order of preference. As long as your instructions are clear, having looked at any other bids left on the lots, we will do our best to comply with your preferences.

In the event of two identically highest bids, the earliest bid received will take precedence.

An auction price is made up of different components; the winning bid is called the 'hammer price'; A commission, which is in addition to the 'hammer price' is payable to the auctioneers. This is known as the buyers premium, on which VAT is payable. Lots marked with p are subject to Artist Resale Right (ARR), which is 4% of the "hammer price". All lots that have additional VAT are clearly marked in the catalogue with a †.

SUMMERS PLACE AUCTIONS AUTHENTICITY GUARANTEE

If Summers Place Auctions Ltd sells an item which subsequently is shown to be a “counterfeit”, subject to the terms below Summers Place Auctions Ltd will set aside the sale and refund to the Buyer the total amount paid by the Buyer to Summers Place Auctions Ltd for the item, in the currency of the original sale.

For these purposes, “counterfeit” means a lot that in Summers Place Auctions Ltd reasonable opinion is an imitation created to deceive as to authorship, origin, date, age, period, culture or source, where the correct description of such matters is not reflected by the description in the catalogue (taking into account any Glossary of Terms). No lot shall be considered a counterfeit by reason only of any damage and/ or restoration and/or modification work of any kind (including repainting or over-painting).

Please note that this Guarantee does not apply if either:-

- (i) the catalogue description was in accordance with the generally accepted opinion(s) of scholar(s) and expert(s) at the date of the sale, or the catalogue description indicated that there was a conflict of such opinions; or
- (ii) the only method of establishing at the date of the sale that the item was a counterfeit would have been by means of processes not then generally available or accepted, unreasonably expensive or impractical to use; or likely to have caused damage to the lot or likely (in Summers Place Auctions Ltd reasonable opinion) to have caused loss of value to the lot; or
- (iii) there has been no material loss in value of the lot from its value had it been in accordance with its description.

This Guarantee is provided for a period of five (5) years after the date of the relevant auction, is solely for the benefit of the Buyer and may not be transferred to any third party. To be able to claim under this Guarantee, the Buyer must:-

- (i) notify Summers Place Auctions Ltd in writing within three (3) months of receiving any information that causes the Buyer to question the authenticity or attribution of the item, specifying the lot number, date

of the auction at which it was purchased and the reasons why it is thought to be counterfeit; and

- (ii) return the item to Summers Place Auctions Ltd in the same condition as at the date of sale to the Buyer and be able to transfer good title in the item, free from any third party claims arising after the date of the sale.

Summers Place Auctions Ltd has discretion to waive any of the above requirements. Summers Place Auctions Ltd may require the Buyer to obtain at the Buyer’s cost the reports of two independent and recognised experts in the field, mutually acceptable to Summers Place Auctions Ltd and the Buyer. Summers Place Auctions Ltd shall not be bound by any reports produced by the Buyer, and reserves the right to seek additional expert advice at its own expense. In the event Summers Place Auctions Ltd decides to rescind the sale under this Guarantee, it may refund to the Buyer the reasonable costs of up to two mutually approved independent expert reports.

GUIDE FOR PROSPECTIVE BUYERS

1. Buyer’s Premium Rates

The buyer’s premium payable by the buyer of each lot is at a rate of 25% on the first £250,000, then 20% on the amount by which the hammer price exceeds £250,000, plus an amount in respect of VAT thereon (see below).

2. VAT on Hammer Price and Buyer’s Premium and VAT Symbols in the Catalogue

Property with no VAT symbol

Where there is no VAT symbol, Summers Place Auctions Ltd are able to use the Auctioneer’s Margin Scheme and VAT will not normally be charged on the hammer price. Summers Place Auctions Ltd must bear VAT on the buyer’s premium and hence will charge an amount in lieu of VAT at 20% on this premium, which will not be shown separately on the invoice.

Property with a † symbol

These items will be sold under the normal UK VAT rules and VAT will be charged at 20% on both the hammer price and buyer’s premium.

Property with a @ symbol

It is assumed that items sold to buyers whose address is in the European Union (EU) will be remaining in the EU. The property will be invoiced as if it had no VAT symbol.

It is assumed that items sold to buyers whose address is outside the EU, will be exported from the EU. The property will be invoiced under the normal VAT rules (see 'Property with a † symbol above).

Property sold with a ‡ or Ω symbol

These items have been imported to be sold at auction under temporary importation. When Summers Place Auctions Ltd release such property to buyers in the UK, the buyer will become the importer and must pay Summers Place Auctions Ltd import VAT at the following rates on the hammer price:

‡ @ 5% Ω @ 20%

Summers Place Auctions Ltd must bear VAT on the buyer's premium and hence will charge an amount in lieu of VAT at 20% on this premium, which will not be shown separately on the invoice.

VAT Refunds

VAT may be cancelled or refunded on export if strict conditions are met and a fee of £30 plus VAT will be charged for this service. For advice, please contact us on 01403 331 331

Sales and Uses Taxes

Buyers from outside the UK should note that local sales taxes or use taxes may become payable upon import of items following purchase (for example, the Use Tax payable on import of purchased items to certain states of the USA). Buyers should obtain their own advice in this regard.

Artist's Resale Right

Purchase of lots marked with the following symbol▲ will be subject to payment of the Artist's Resale Right, when the sale price reaches or exceeds £1,000 at a percentage of the hammer price calculated as follows:

Portion of the hammer price (in) Royalty Rate

Upto 50,000 4%

From 50,000.01 to 200,000 3%

From 200,000.01 to 350,000 1%

From 350,000.01 to 500,000 0.5%

Exceeding 500,000 0.25%

The Artist's Resale Right payable will be the aggregate of the amounts payable under the above rate bands, subject to a maximum royalty payable of £12,500 for any single work each time it is sold. The maximum royalty payable of £12,500 applies to works sold for £2 million and above. Calculation of the artist's resale right will be based on the Pounds Sterling / Euro reference exchange rate quoted on the date of the sale by the European Central Bank.

Property with a symbol.

Some of these items require specialist dismantling and may not be available for immediate collection after the sale. Intending purchasers should check the status of these lots before the sale.

3. Before the Auction

Pre-sale Estimates

Pre-sale estimates are intended as a guide for prospective buyers but all lots can realise prices above or below the pre-sale estimates. Seller's confidential reserves are set no higher than the low pre-sale estimates, except in the rare circumstance in which the reserve has been set in a foreign currency and the exchange rate has fluctuated.

It is advisable to consult us nearer the time of sale as estimates can be subject to revision. The estimates printed in the auction catalogue do not include the buyer's premium or VAT.

Provenance

In certain circumstances, Summers Place Auctions Ltd may print in the catalogue the history of ownership of a work of art if such information contributes to scholarship or is otherwise well known and assists in distinguishing the work of art. However, the identity of the seller or previous owners may not be disclosed for a variety of reasons. For example, such information may be excluded to accommodate a seller's request for confidentiality or because the identity of prior owners is unknown given the age of the work of art.

C.I.T.E.S.

All the relevant lots in this sale have been carefully vetted, mindful of current C.I.T.E.S. regulations, concerning the sale of endangered species. We are happy to provide advice on any lots, to overseas buyers concerning export restrictions. However, it is ultimately the buyers responsibility to satisfy themselves that the correct licenses can be obtained prior to bidding.

Condition of Lots

All lots are available for inspection and Condition Reports are available on request. However, all lots are of an age and type which means that they may not be in perfect condition and should be viewed by prospective bidders; please refer to Condition 3 of the Conditions of Business for Buyers.

Electrical and Mechanical Goods

All electrical and mechanical goods are sold on the basis of their artistic and decorative value only, and should not be assumed to be operative. It is essential that any electrical system is checked and approved by a suitably qualified electrician, prior to use.

4. The Auction

Auction speeds vary, and generally average between 50 and 120 lots per hour. The auctioneer will commence and advance the bidding at levels and in increments he considers appropriate (generally in increments of approximately 10% of the previous bid) and is entitled to place a bid or series of bids on behalf of the seller up to the reserve on the lots, without indicating he is doing so and whether or not other bids are placed.

Please note Conditions 5 and 6 of the Conditions of Business for Buyers contain additional information on bidding.

Bidding in Person

To bid at auction you must register with us to obtain a bidding number. Before the auction, fill in the form at the registration desk, provide proof of identity, and you may be given a paddle showing your bidding number. This paddle should be used for bidding. The auctioneer will note this number when you purchase a lot.

Live Auctions

The auction takes place in the gallery with each lot displayed on a plasma screen as it is sold. Prospective purchasers are encouraged to attend the sale and must register their details with us beforehand. Bidding is by numbered paddle.

Absentee Bids

If you cannot attend the auction we will be happy to execute written bids on your behalf, so long as you have registered your details with us beforehand and are compliant with AML regulations. A bidding form is printed in the back of the catalogue. This service is confidential. Lots will always be bought as cheaply as is consistent with other bids, the reserves and other commission bids. To avoid confusion, the sale date, lot number and a brief description should be filled in and signed. Commission bids by email without a signature will not be accepted. In the event of identical bids, the earliest received will take precedence. Always indicate a top limit, i.e. the highest price you would bid if you were attending the auction. Don't forget that buyers premium and any VAT applicable will also be added onto your bid if you are successful. "Buy" and unlimited bids will not be accepted. Please refer to our conditions of business for buyers, which is also printed in the back of our catalogues. To ensure a satisfactory service please ensure that we receive your bids at least 24 hours beforehand.

Telephone bids (LIVE auction only)

If you cannot attend the auction, it is usually possible to bid on the telephone. You will need to have registered your details with us 5 days before the auction. As the number of telephones is limited, it is necessary to make arrangements on which lots you wish to bid on, at least 24 hours before the sale. We also suggest that you leave a maximum bid which we can execute on your behalf in the event we are unable to reach you by telephone. Please refer to our conditions of business for buyers, which is also printed in the back of our catalogues.

Online Bidding (SummersPlace Live - no surcharge)

If you cannot attend the auction, you may wish to bid using the.saleroom.com, which will incur an additional 5% of the hammer price plus VAT at the rate imposed or use our own platform **SummersPlace Live**

Sealed bid

For further information please see pages at the end of this section.

Sale by private treaty

Summers Place Auctions shall, from time to time, be offering some lots for sale by Private Treaty in our architectural portfolio. These will usually comprise larger pieces of an architectural nature, which will require a longer period of planning and consultation than an auction can provide. Additionally if you are looking for a specific piece please let us know and we will use our worldwide network of trade and private clients to help source the most suitable item for you. Please contact us for further information.

Payment

Payment is due in sterling immediately after the sale and before purchases can be released. Payments in person can be made in the saleroom on the day of the auction using mobile banking. All payments must be by electronic transfer to our bank. Cash will not be accepted.

Wire transfers can be made directly to our bank. Please contact us for further details. Sterling Banker's Drafts and Building Society Cheques drawn on a recognised UK bank or building society are also accepted.

Credit/Debit Card

Regrettably we are no longer able to accept credit or debit cards

Collection and Storage

On receipt of cleared funds, lots can be collected from the Walled Garden, Stane Street, Billingshurst, West Sussex, RH14 9AB, Monday to Friday between 9.30am and 12.30pm and 2.00pm and 4.00pm. **Collection of lots is strictly by prior appointment and must be arranged at least 48hours in advance.** If Lots have not been collected within 35 days of the auction date then storage charges may be applied at a rate of £10 per Lot per day. Buyers are reminded that liability for loss and damage transfers to the buyer from the fall of the hammer. Whilst the majority of lots will remain in their location until collected, Summers Place Auctions accept no responsibility for any damage which may occur, even in the event of Summers Place Auction staff assisting carriers during collection.

Summers Place Auctions also reserves the right to charge

storage fees of £10.00 per lot, per week, for any pieces left at Summers Place over a longer period than six weeks irrespective of whether they have been entered into a sale or not.

Shipping

We are happy to arrange shipping quotations and have extensive experience in working in conjunction with leading domestic and international shippers. There is no charge for arranging quotations.

CONDITIONS OF BUSINESS FOR BUYERS

1. INTRODUCTION

(a) The contractual relationship of Summers Place Auctions Ltd and Sellers with prospective Buyers is governed by:-

(i) these Conditions of Business for Buyers;

(ii) the Conditions of Business for Sellers displayed in the saleroom and available from Summers Place Auctions Ltd

(iii) Summers Place Auctions Ltd 's Authenticity Guarantee; (iv) any additional notices and terms printed in the sale catalogue, in each case as amended by any saleroom notice or auctioneer's announcement.

(b) As auctioneer, Summers Place Auctions Ltd acts as agent for the Seller. Occasionally, Summers Place Auctions Ltd may own or have a financial interest in a lot.

2. DEFINITIONS

"Bidder" is any person making, attempting or considering making a bid, including Buyers;

"Buyer" is the person who makes the highest bid or offer accepted by the auctioneer, including a Buyer's principal when bidding as agent;

"Seller" is the person offering a lot for sale, including their agent, or executors;

"Buyer's Expenses" are any costs or expenses due to Summers Place Auctions Ltd from the Buyer;

“Buyer’s Premium” is the commission payable by the Buyer on the Hammer Price or winning sealed bid price at the rates set out in the Guide for Prospective Buyers;

“Hammer Price” is the highest bid for the Property accepted by the auctioneer at the auction or the post auction sale price; “Purchase Price” is the Hammer Price plus applicable Buyer’s Premium and Buyer’s Expenses;

“Reserve Price” (where applicable) is the minimum Hammer Price at which the Seller has agreed to sell a lot.

The Buyer’s Premium, Buyer’s Expenses and Hammer Price are subject to VAT, where applicable.

3. EXAMINATION OF LOTS

(a) Summers Place Auctions Ltd knowledge of lots is partly dependent on information provided by the Seller and Summers Place Auctions Ltd is unable to exercise exhaustive due diligence on each lot. Each lot is available for examination before sale. Bidders are responsible for carrying out examinations and research before sale to satisfy themselves over the condition of lots and accuracy of descriptions.

(b) All oral and/or written information provided to Bidders relating to lots, including descriptions in the catalogue, condition reports or elsewhere are statements of Summers Place Auctions Ltd opinion and not representations of fact. Estimates may not be relied on as a prediction of the selling price or value of the lot and may be revised from time to time at Summers Place Auctions Ltd absolute discretion.

4. EXCLUSIONS AND LIMITATIONS OF LIABILITY TO BUYERS (a) Summers Place Auctions Ltd shall refund the Purchase Price to the Buyer in circumstances where it deems that the lot is a Counterfeit, subject to the terms of Summers Place Auctions Ltd Authenticity Guarantee.

(b) Subject to Condition 4(a), neither Summers Place Auctions Ltd nor the Seller:-

(i) is liable for any errors or omissions in any oral or written information provided to Bidders by Summers Place Auctions Ltd, whether negligent or otherwise;

(ii) gives any guarantee or warranty to Bidders and any implied warranties and conditions are excluded (save in so far as such obligations cannot be excluded by English law), other than the express warranties given

by the Seller to the Buyer (for which the Seller is solely responsible) under the Conditions of Business for Sellers;

(iii) accepts responsibility to Bidders for acts or omissions (whether negligent or otherwise) by Summers Place Auctions Ltd in connection with the conduct of auctions or for any matter relating to the sale of any lot.

(c) Without prejudice to Condition 4(b), any claim against Summers Place Auctions Ltd and/or the Seller by a Bidder is limited to the Purchase Price for the relevant lot. Neither Summers Place Auctions Ltd nor the Seller shall be liable for any indirect or consequential losses.

(d) Nothing in Condition 4 shall exclude or limit the liability of Summers Place Auctions Ltd or the Seller for death or personal injury caused by the negligent acts or omissions of Summers Place Auctions Ltd or the Seller.

5. BIDDING AT AUCTION

(a) Summers Place Auctions Ltd has absolute discretion to refuse admission to the auction. Before sale, Bidders must complete a Registration Form and supply such information and references as Summers Place Auctions Ltd requires. Bidders are personally liable for their bid and are jointly and severally liable with their principal, if bidding as agent (in which case Summers Place Auctions Ltd’s prior and express consent must be obtained).

(b) Summers Place Auctions Ltd advises Bidders to attend the auction, but Summers Place Auctions Ltd will endeavour to execute absentee written bids provided that they are, in Summers Place Auctions Ltd’s opinion, received in sufficient time and in legible form.

(c) When available, written and telephone bidding is offered as a free service at the Bidder’s risk and subject to Summers Place Auctions Ltd’s other commitments; Summers Place Auctions Ltd is therefore not liable for failure to execute such bids. Telephone bidding may be recorded.

6. IMPORT, EXPORT AND COPYRIGHT RESTRICTIONS Summers Place Auctions Ltd and the Seller make no representations or warranties as to whether any lot is subject to import, export or copyright restrictions. It is the Buyer’s sole responsibility to obtain any copyright clearance or any necessary import, export or other licence required by law, including licenses required blaw under the International Trade in Endangered Species (CITES).

7. CONDUCT OF THE AUCTION

(a) The auctioneer has discretion to refuse bids, withdraw or re-offer lots for sale (including after the fall of the hammer) if (s)he believes that there may be an error or dispute, and may also take such other action as (s)he reasonably deems necessary. (b) The auctioneer will commence and advance the bidding in such increments as (s)he considers appropriate and is entitled to place bids on the Seller's behalf up to the Reserve Price for the lot, where applicable.

(c) Subject to Condition 7(a), the contract between the Buyer and the Seller is concluded on the striking of the auctioneer's hammer.

(d) Any post-auction sale of lots shall incorporate these Conditions of Business.

8. PAYMENT AND COLLECTION

(a) Unless otherwise agreed in advance, payment of the Purchase Price is due in pounds sterling immediately after the auction (the "Payment Date").

(b) Title in a lot will not pass to the Buyer until Summers Place Auctions Ltd has received the Purchase Price in cleared funds. Summers Place Auctions Ltd will not release a lot to a Buyer before payment.

(c) The refusal of any licence or permit required by law, as outlined in Condition 6, shall not affect the Buyer's obligation to pay for the lot, as per Condition 8(a).

(d) The Buyer must arrange collection of lots within 35 working days of the auction. Purchased lots are at the Buyer's risk from the fall of the hammer.

(e) All packing and handling of lots is at the Buyer's risk. Summers Place Auctions Ltd will not be liable for any acts or omissions of third party removers or shippers.

9. REMEDIES FOR NON-PAYMENT

Without prejudice to any rights that the Seller may have, if the Buyer without prior agreement fails to make payment for the lot within 5 working days of the auction, Summers Place Auctions Ltd may in its sole discretion exercise one or more of the following remedies:-

(a) store the lot at its premises or elsewhere at the Buyer's sole risk and expense;

(b) cancel the sale of the lot;

(c) set off any amounts owed to the Buyer by Summers Place Auctions Ltd against any amounts owed to Summers Place Auctions Ltd by the Buyer for the lot;

(d) reject future bids from the Buyer;

(e) charge interest at 4% per annum above NatWest Bank Base Rate from the

Payment Date to the date that the Purchase Price is received in cleared funds;

(f) re-sell the lot by auction or privately, with estimates and reserves at Summers Place Auction Ltd.'s discretion, in which case the Buyer will be liable for any shortfall between the original Purchase Price and the amount achieved on re-sale, including all costs incurred in such re-sale;

(g) Exercise a lien over any Buyer's Property in Summers Place Auctions Ltd's possession, applying the sale proceeds to any amounts owed by the Buyer to Summers Place Auctions Ltd. Summers Place Auctions Ltd shall give the Buyer 14 days written notice before exercising such lien;

(h) commence legal proceedings to recover the Purchase Price for the lot, plus interest and legal costs;

(i) disclose the Buyer's details to the Seller to enable the Seller to commence legal proceedings.

10. FAILURE TO COLLECT PURCHASES

(a) If the Buyer pays the Purchase Price but does not collect the lot within 35 days of the auction, the lot will be stored at the Buyer's expense and risk at Summers Place Auctions Ltd's premises or in independent storage.

(b) If a lot is paid for but uncollected within 6 months of the auction, following 60 days written notice to the Buyer, Summers Place Auctions Ltd will re-sell the lot by auction or privately, with estimates and reserves at Summers Place Auctions Ltd's discretion. The sale proceeds, less all Summers Place Auctions Ltd's costs, will be forfeited unless collected by the Buyer within 2 years of the original auction.

11. DATA PROTECTION

(a) Summers Place Auctions Ltd will use information supplied by Bidders or otherwise obtained lawfully by Summers Place Auctions Ltd for the provision of auction related services, client administration, marketing and as otherwise required by law.

(b) By agreeing to these Conditions of Business, the Bidder agrees to the processing of their personal information and to the disclosure of such information to third parties world-wide for the purposes outlined in Condition 11(a) and to Sellers as per Condition 9(i).

12. MISCELLANEOUS

(a) All images of lots, catalogue descriptions and all other materials produced by Summers Place Auctions Ltd are the copyright of Summers Place Auctions Ltd.

(b) These Conditions of Business are not assignable by any Buyer without Summers Place Auctions Ltd's prior written consent, but are binding on Bidders' successors, assigns and representatives.

(c) The materials listed in Condition 1(a) set out the entire agreement between the parties.

(d) If any part of these Conditions of Business be held unenforceable, the remaining parts shall remain in full force and effect.

(e) These Conditions of Business shall be interpreted in accordance with English Law, under the exclusive jurisdiction of the

English Courts, in favour of Summers Place Auctions Ltd.

GLOSSARY OF TERMS

The following are examples of the terminology used in this catalogue. Any statement as to authorship, attribution, origin, date, age provenance and condition is a statement of opinion and is not to be taken as a statement of fact.

Please read carefully the terms of the Authenticity Guarantee and the Conditions of Business for Buyers set out in this catalogue.

Antonio Canova

In our opinion a work by the artist. In the case of 19th century sculpture this indicates that the work was made in our opinion either by the artist or by a foundry or editor who had the rights to reproduce the artist's original model either during the artist's lifetime or for a defined posthumous period. (When the artist's forenames are not known, a series of asterisks, followed by the surname of the artist, whether preceded by an initial or not indicates that in our opinion the work is by the artist named).

Attributed to Antonio Canova

In our opinion probably a work by the artist but less certainty as to authorship is expressed than in the preceding category.

Manner of Antonio Canova

In our opinion a work in the style of the artist and of a later date

After Antonio Canova

In our opinion a copy at a later date of a known work by the artist. In the 19th century this indicates that in our opinion the work was made by a foundry or editor at a later date and apparently without exclusive rights.

Italian 18th century

In our opinion a work from that region and of that date.

Probably Italian 18th century

In our opinion a work that is likely to be from that region and/or of that date but less certainty as to the region and/or date than is expressed in the preceding category.

In renaissance style

In our opinion a work executed in the style of the renaissance but not necessarily of that period.

The term signed and/or dated and/or inscribed means that in our opinion the signature and/or date and/or inscription are original to the model or authorized by the sculptor's studio or editor but not necessarily from the hand of the artist.

The term bearing the signature and/or date and/or inscription means that in our opinion the signature and/or date and/or inscription have been added at a later date.

Dimensions are given height before width

Condition of lots

Condition is only noted in the catalogue where an item is severely distressed. Prospective purchasers making commission bids without viewing the sale can be given condition reports on any lot on request.

It is essential for buyers to satisfy themselves as to the condition of lots prior to the sale and to arrange their own insurance cover against loss and damage immediately after the sale. Please refer to the Conditions of Business for Buyers.

Sp
SUMMERS PLACE
AUCTIONS



THE WALLED GARDEN
SUMMERS PLACE
BILLINGSHURST
WEST SUSSEX
RH14 9AB
+44(0)1403 331 331

www.summersplaceauctions.com